

CATALOG



ADVANCED HURRICANE TECHNOLOGY



**ROLLSHUTTERS
COMPONENTS
AND PARTS**

Contact Us: sales@aht-usa.net

INDEX

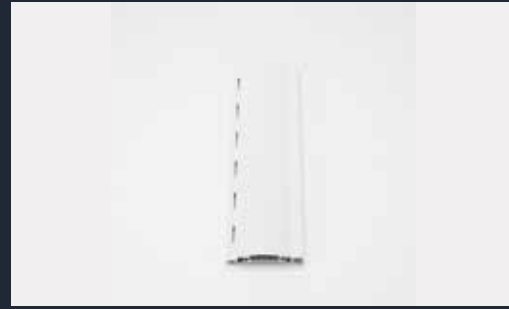
Slats and Tracks	2
Housings	4
End caps - Safety plates	5
Reel - Idlers - Brackets	6
Rolldown accessories	9
Gears springs	12
Universals	13
Motors controls	15
Angles	19
Tubes	20
Hardware	21

SLATS - TRACKS



SLAT 40MM @ 20'

White - 1011401
Ivory - 1011402
Beige - 1011403
Bronze - 1011404



SLAT 55MM @ 24'

White - 1011501
Ivory - 1011502
Beige - 1011503
Bronze - 1011504



**SLAT END RETENTION
55MM VIEWPORT @ 24'**

White @ 24' - 10116021
Ivory @ 24' - 10116022
Beige @ 24' - 10116023
Bronze @ 24' - 10116024



SLAT 58MM @ 24'

White - 1011201
Ivory - 1011202
Beige - 1011203
Bronze - 1011204



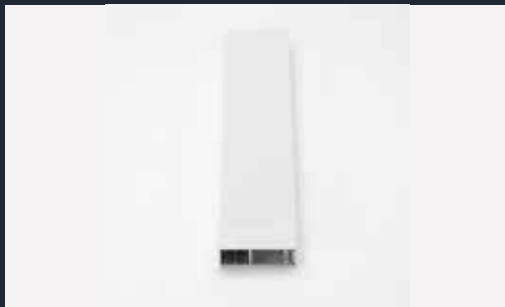
SLAT 58MM VIEWPORT @ 24'

White - 1011211
Ivory - 1011212
Beige - 1011213
Bronze - 1011214



SLAT 60MM @ 24'

White - 1010101
Ivory - 1010102
Beige - 1010103
Bronze - 1010104



TRACK MINI .875 X 2.5 @ 20'

White - 1012001
Ivory - 1012002
Beige - 1012003
Bronze - 1012004



TRACK STANDARD 1 X 3 @ 24'

White - 1012401
Ivory - 1012402
Beige - 1012403
Bronze - 1012404

SLATS - TRACKS



**TRACK SUPER-T END
RETENTION 1.125 X 3.25 @ 24'**
 White - 10130211
 Ivory - 10130222
 Beige - 10130233
 Bronze - 10130244



**SNAP TRACK SUPER-T END
RETENTION 1.125 X 3.25 @ 24'**
 White - 10130311
 Ivory - 10130322
 Beige - 10130333
 Bronze - 10130344



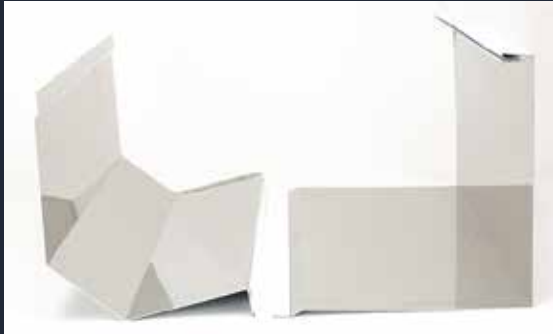
SNAP COVER CAP @ 24'
 White - 10130411
 Ivory - 10130422
 Beige - 10130433
 Bronze - 10130444



**TRACK MEGA END
RETENTION 1.25 X 4.5 @ 24'**
 White - 1014021
 Ivory - 1014022
 Beige - 1014023
 Bronze - 1014024



**TRACK FOR SCREEN
1 X 3.25 @ 24'**
 White - 50551211
 Ivory - 50551222
 Beige - 50551233
 Bronze - 50551244



HOUSING 45°

- 1100401 - 114.3 mm (4½") - White
- 1100402 - 114.3 mm (4½") - Ivory
- 1100403 - 114.3 mm (4½") - Beige
- 1100404 - 114.3 mm (4½") - Bronze
- 1100551 - 137 mm (5½") - White
- 1100552 - 137 mm (5½") - Ivory
- 1100553 - 137 mm (5½") - Beige
- 1100554 - 137 mm (5½") - Bronze
- 1100601 - 150 mm (6") - White
- 1100602 - 150 mm (6") - Ivory
- 1100603 - 150 mm (6") - Beige
- 1100604 - 150 mm (6") - Bronze
- 1100651 - 165 mm (6½") - White
- 1100652 - 165 mm (6½") - Ivory
- 1100653 - 165 mm (6½") - Beige
- 1100654 - 165 mm (6½") - Bronze
- 1100701 - 180 mm (7") - White
- 1100702 - 180 mm (7") - Ivory
- 1100703 - 180 mm (7") - Beige
- 1100704 - 180 mm (7") - Bronze
- 1100801 - 205 mm (8") - White
- 1100802 - 205 mm (8") - Ivory
- 1100803 - 205 mm (8") - Beige
- 1100804 - 205 mm (8") - Bronze

- 1100901 - 230 mm (9") - White
- 1100902 - 230 mm (9") - Ivory
- 1100903 - 230 mm (9") - Beige
- 1100904 - 230 mm (9") - Bronze
- 1101001 - 250 mm (10") - White
- 1101002 - 250 mm (10") - Ivory
- 1101003 - 250 mm (10") - Beige
- 1101004 - 250 mm (10") - Bronze
- 1101201 - 300 mm (12") - White
- 1101202 - 300 mm (12") - Ivory
- 1101203 - 300 mm (12") - Beige
- 1101204 - 300 mm (12") - Bronze
- 1101301 - 325 mm (13") - White
- 1101302 - 325 mm (13") - Ivory
- 1101303 - 325 mm (13") - Beige
- 1101304 - 325 mm (13") - Bronze
- 1101401 - 350 mm (14") - White
- 1101402 - 350 mm (14") - Ivory
- 1101403 - 350 mm (14") - Beige
- 1101404 - 350 mm (14") - Bronze
- 1101601 - 400 mm (16") - White
- 1101602 - 400 mm (16") - Ivory
- 1101603 - 400 mm (16") - Beige
- 1101604 - 400 mm (16") - Bronze



FRONT HOOD 45°

- 1102551 - 137 mm (5½") - White
- 1102552 - 137 mm (5½") - Ivory
- 1102553 - 137 mm (5½") - Beige
- 1102554 - 137 mm (5½") - Bronze
- 1102601 - 150 mm (6") - White
- 1102602 - 150 mm (6") - Ivory
- 1102603 - 150 mm (6") - Beige
- 1102604 - 150 mm (6") - Bronze
- 1102651 - 165 mm (6½") - White
- 1102652 - 165 mm (6½") - Ivory
- 1102653 - 165 mm (6½") - Beige
- 1102654 - 165 mm (6½") - Bronze
- 1102701 - 180 mm (7") - White
- 1102702 - 180 mm (7") - Ivory
- 1102703 - 180 mm (7") - Beige
- 1102704 - 180 mm (7") - Bronze
- 1102801 - 205 mm (8") - White
- 1102802 - 205 mm (8") - Ivory
- 1102803 - 205 mm (8") - Beige
- 1102804 - 205 mm (8") - Bronze

- 1102901 - 230 mm (9") - White
- 1102902 - 230 mm (9") - Ivory
- 1102903 - 230 mm (9") - Beige
- 1102904 - 230 mm (9") - Bronze
- 1103001 - 250 mm (10") - White
- 1103002 - 250 mm (10") - Ivory
- 1103003 - 250 mm (10") - Beige
- 1103004 - 250 mm (10") - Bronze
- 1103201 - 300 mm (12") - White
- 1103202 - 300 mm (12") - Ivory
- 1103203 - 300 mm (12") - Beige
- 1103204 - 300 mm (12") - Bronze
- 1103401 - 350 mm (14") - White
- 1103402 - 350 mm (14") - Ivory
- 1103403 - 350 mm (14") - Beige
- 1103404 - 350 mm (14") - Bronze
- 1103601 - 400 mm (16") - White
- 1103602 - 400 mm (16") - Ivory
- 1103603 - 400 mm (16") - Beige
- 1103604 - 400 mm (16") - Bronze



BACK HOOD 45°

- 1104551 - 137 mm (5½") - White
- 1104552 - 137 mm (5½") - Ivory
- 1104553 - 137 mm (5½") - Beige
- 1104554 - 137 mm (5½") - Bronze
- 1104601 - 150 mm (6") - White
- 1104602 - 150 mm (6") - Ivory
- 1104603 - 150 mm (6") - Beige
- 1104604 - 150 mm (6") - Bronze
- 1104651 - 165 mm (6½") - White
- 1104652 - 165 mm (6½") - Ivory
- 1104653 - 165 mm (6½") - Beige
- 1104654 - 165 mm (6½") - Bronze
- 1104701 - 180 mm (7") - White
- 1104702 - 180 mm (7") - Ivory
- 1104703 - 180 mm (7") - Beige
- 1104704 - 180 mm (7") - Bronze
- 1104801 - 205 mm (8") - White
- 1104802 - 205 mm (8") - Ivory
- 1104803 - 205 mm (8") - Beige
- 1104804 - 205 mm (8") - Bronze

- 1104901 - 230 mm (9") - White
- 1104902 - 230 mm (9") - Ivory
- 1104903 - 230 mm (9") - Beige
- 1104904 - 230 mm (9") - Bronze
- 1105001 - 250 mm (10") - White
- 1105002 - 250 mm (10") - Ivory
- 1105003 - 250 mm (10") - Beige
- 1105004 - 250 mm (10") - Bronze
- 1105201 - 300 mm (12") - White
- 1105202 - 300 mm (12") - Ivory
- 1105203 - 300 mm (12") - Beige
- 1105204 - 300 mm (12") - Bronze
- 1105401 - 350 mm (14") - White
- 1105402 - 350 mm (14") - Ivory
- 1105403 - 350 mm (14") - Beige
- 1105404 - 350 mm (14") - Bronze
- 1105601 - 400 mm (16") - White
- 1105602 - 400 mm (16") - Ivory
- 1105603 - 400 mm (16") - Beige
- 1105604 - 400 mm (16") - Bronze

* 90° housings, six-sided housings and custom hoods available *

HOUSINGS

END CAPS



END CAP - BIG PIN 45 DEGREE

White	8 "	1210811
Ivory	8 "	1210812
Beige	8 "	1210813
Bronze	8 "	1210814

White	10 "	1211001
Ivory	10 "	1211002
Beige	10 "	1211003
Bronze	10 "	1211004

White	12 "	1211201
Ivory	12 "	1211202
Beige	12 "	1211203
Bronze	12 "	1211204



END CAP - SMALL PIN 45 DEGREE

White	5.5 "	1210551
Ivory	5.5 "	1210552
Beige	5.5 "	1210553
Bronze	5.5 "	1210554

White	6 "	1210601
Ivory	6 "	1210602
Beige	6 "	1210603
Bronze	6 "	1210604

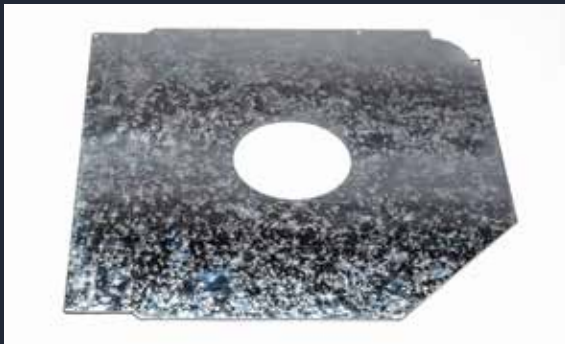
White	6.5 "	1210651
Ivory	6.5 "	1210652
Beige	6.5 "	1210653
Bronze	6.5 "	1210654

White	7 "	1210701
Ivory	7 "	1210702
Beige	7 "	1210703
Bronze	7 "	1210704

White	8 "	1210801
Ivory	8 "	1210802
Beige	8 "	1210803
Bronze	8 "	1210804

White	10 "	1211011
Ivory	10 "	1211012
Beige	10 "	1211013
Bronze	10 "	1211014

SAFETY PLATES



SAFETY PLATE 60MM REEL

Steel	5.5 "	1310560
Steel	6.5 "	1310661
Steel	7 "	1310760



SAFETY PLATE 70MM REEL

Steel	8 "	1310870
Steel	10 "	1311070
Steel	12 "	1311270

REEL - IDLERS - BRACKETS



**TUBE 60mm ALUMINUM
OCTAGONAL @ 24'**

1426005



**TUBE 60mm (0.8) GALVANIZED
OCTAGONAL @ 19' (5.8m)**

1426007



**TUBE 70mm ALUMINUM
ROUND @ 24'**

1427004



**TUBE 70mm (1.2) GALVANIZED
OCTAGONAL @ 19' (5.8m)**

1427007



**TUBE 98mm ALUMINUM
ROUND FOR SCREEN @ 24'**

1428100



**TUBE 152mm ALUMINUM
ROUND FOR SCREEN @ 22'**

1428101



**TUBE 100mm OD (94mm ID)
STEEL-ROUND @ 24'**

1429100



**IDLER-ADJUSTABLE
ALUMINUM 60mm**

1456005

REEL - IDLERS - BRACKETS



**IDLER-ADJUSTABLE
ALUMINUM 70mm**

1457005



**IDLER-ADJUSTABLE 100mm
HD PVC (w/w:1464280)**

1460102



**IDLER-ADJUSTABLE 60mm
HD PVC (w/w:1464281)**

1460103



**IDLER-ADJUSTABLE 70mm
HD PVC (w/w:1464281)**

1460104



**IDLER-CAP 60mm
(28mm BEARING) - PVC**

1460261



**IDLER-CAP 60mm
ALUMINUM**

1460262



**IDLER-CAP 60mm
PVC**

1460263



**IDLER-CAP 70mm
ALUMINUM**

1460271



BRACKET SUPPORT 300mm STEEL (Unit) 1461011



BRACKET 100 x 100 HEAVY DUTY 42mm Bearing 1461012



BRACKET 100 x 100 42mm Bearing 1464263



BRACKET FOR IDLER 100mm HD PVC (w/w:1460102) 1464280



BRACKET FOR IDLER 60 & 70mm- HD PVC (w/w:1460103 & 1460104) 1464281



BALL BEARING 28mm METAL 1472806



BALL BEARING 42mm METAL 1474206

REEL - IDLERS - BRACKETS

ROLLDOWN - ACCESSORIES



WEATHER STRIP MINI AND SUPER-T TRACK GRAY 1628405
1750' / ROLL



WEATHER STRIP MEGA AND STANDARD TRACK BLACK 1628415
2500' / ROLL



WEATHER STRIP RUBBER FOR 40MM, 55MM, 58MM & 60MM SLAT 1628551
300' / ROLL



WEATHER STRIP-RUBBER FOR HURRICANE SCREEN BOTTOM BAR 1628570
500' / ROLL



SLAT END LOCK 40mm STD (R&L) 1700138



SLAT END LOCK 55mm E/R (R&L) 1700133



SLAT END LOCK 58mm E/R (R&L) 1700134



SLAT END LOCK 58mm STD (R&L) 1700136

ROLLDOWN - ACCESSORIES



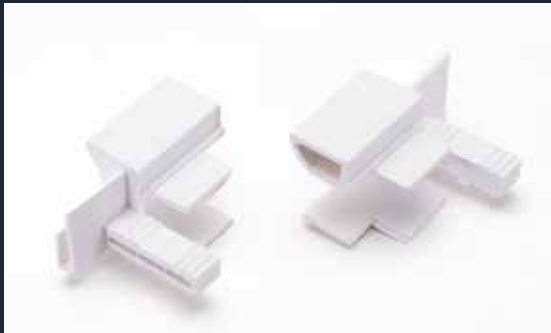
**SLAT END LOCK 60mm
E/R (R&L)**

1700130



**BOTTOM BAR ENTRY GUIDE
FOR HURRICANE SCREEN**

1700140



ENTRY GUIDE MINI

1250050



ENTRY GUIDE MAXI

1250150



**SLAT HANGER SCREW MOUNT
- MAXI**

1418086



**SLAT HANGER
QUICK MOUNT SPLIT- MAXI**

1418089



**SLAT HANGER SCREW
MOUNT- MINI**

1418185



**SLAT HANGER
QUICK MOUNT - MINI**

1418188

ROLLDOWN - ACCESSORIES



CONICAL UP STOP

- White - 1628001
- Ivory - 1628002
- Beige - 1628003
- Bronze - 1628004



HOLE PLUG 5/8IN

- White - 1628101
- Ivory - 1628102
- Beige - 1628103
- Bronze - 1628104



BRACKET WITH PIVOT 100X100mm
1461010



OVAL GEAR 11:1 PVC FOR SQ SHAFT
(Max. 30Kg), Pivot included
1501100



OVAL GEAR 11:1 PVC FOR HEX SHAFT
(Max. 30Kg), Pivot included
1501102



SPRING SUPPORT PLATE 100x100
1621010



SPRING ASSIST 60mm TUBE
62 Kg (137 lbs) 37" length
1626062



SPRING ASSIST 70mm TUBE
100 Kg (220 lbs) 40" length
1627100

GEARS - SPRINGS

UNIVERSALS



UNIVERSAL EXTENSION SHAFT 1600062
8mm SQ_20-3/4" length



UNIVERSAL EXTENSION SHAFT 1600064
7mm HEX_20-3/4" length



UNIVERSAL COUPLER FOR
EXTENSION SHAFT 8mm SQ 1600066



UNIVERSAL COUPLER FOR
EXTENSION SHAFT 7mm HEX 1600068



UNIVERSAL 2 HOLE 45° 1604520
7mm HEX



UNIVERSAL 2 HOLE 45° 1604526
8mm SQ



UNIVERSAL 2 HOLE 90° 1609020
7mm HEX



UNIVERSAL 2 HOLE 90° 1609026
8mm SQ

UNIVERSALS



UNIVERSAL 4 HOLE 90° 7mm HEX 1609040



UNIVERSAL 4 HOLE 90° 8mm sq 1609046



CRANK HANDLE 4 3/4' 1610104
 CRANK HANDLE 6' 1610106
 CRANK HANDLE 8' 1610108
 CRANK HANDLE 10' 1610110



CRANK HANDLE 'BELL' MALE 1610307



HAND CRANK TIE-IN FOR 50Nm & 100Nm MOTORS (L=450mm) 2770115



HAND CRANK (EXTENSION) FOR 300Nm MOTOR (8" Length) 2770220

MOTORS - CONTROLS



SWITCH DECORA 1 P
WHITE / MOMENTARY 2208550



SWITCH DECORA 1 P
WHITE / MAINTAINED 2208650



SWITCH SECURITY KEY,
MOMENTARY, SURFACE MOUNT
(Thinner, Black) 2209740



SWITCH SECURITY KEY,
MOMENTARY, SURFACE MOUNT 2209750



MOTOR AHT5045-S 50 Nm 2304500
(w/w:2445060 or 2445070) C&D and
Brackets included



MOTOR AHT5045-R 50 Nm 2304502
RADIO SYSTEM (w/w:2445060 or 2445070)
C&D, Brackets and Remote Control 1 Unit included



MOTOR AHT5045-M 50 Nm 2304504
(w/w:2445060 or 2445070) C&D and
Bracket included



MOTOR AHT5045-RM 50 Nm 2304506
RADIO SYSTEM (w/w:2445060 or 2445070)
C&D, Bracket and Remote Control 1 Unit included

MOTORS - CONTROLS



MOTOR AHT10059-S 100 Nm 2305900
(w/w:2459070 or 2459100) C&D and Brackets included



MOTOR AHT10059-R 100 Nm RADIO SYSTEM 2305902
(w/w:2459070 or 2459100) C&D, Brackets and Remote Control 1 Unit included



MOTOR AHT10059-M 100 Nm 2305904
(w/w:2459070 or 2459100) C&D and Bracket included



MOTOR AHT10059-RM 100 Nm RADIO SYSTEM 2305906
(w/w:2459070 or 2459100) C&D, Bracket and Remote Control 1 Unit included



MOTOR AHT30092-S 300 Nm 2309200
(w/w:2492100) Drive included



MOTOR AHT30092-M 300 Nm 2309204
(w/w:2492100) Drive included



CROWN & DRIVE 75.2mm 2410030



CROWN & DRIVE 60mm OCTAGONAL TUBE (FOR 50Nm SHUTTER MOTOR) 2445060

MOTORS - CONTROLS



CROWN & DRIVE 70mm
OCTAGONAL TUBE
(FOR 50Nm SHUTTER MOTOR) 2445070



CROWN & DRIVE 70mm
OCTAGONAL TUBE
(FOR 100Nm SHUTTER MOTOR) 2459070



CROWN & DRIVE 75mm FOR
AWNING MOTOR - AHT 59mm 2420045



CROWN & DRIVE 100mm ROUND
TUBE (94mm OD_FOR 100Nm
SHUTTER MOTOR) 2459100



DRIVE 100MM ROUND 2492100



BRACKET (SQ-100X100) FOR
50Nm & 100Nm MOTORS 2700175



HOME AUTOMATIZATION
CONNECTOR TYPE D 2807000



REMOTE CONTROL
Type D WALL MOUNT
WIRELESS 1 or 2 Units
(w/w:2807205 & 2807210) D 2807001 - 2807002

MOTORS - CONTROLS



REMOTE CONTROL Type D WALL MOUNT WIRELESS 15 Units (w/w:2807205 & 2807210) D 2807015



REMOTE CONTROL MINIATURE Type D - 1 Unit 9V (w/w:2807205 & 2807210) D 2807052



REMOTE CONTROL Type D 1 Unit (w/w:2807205 & 2807210) D 2807101



REMOTE CONTROL Type D 5 Units (w/w:2807205 & 2807210) D 2807105



REMOTE CONTROL Type D 15 Units (w/w:2807205 & 2807210) D 2807115



RECEIVER Type D - 120 Volt-800W (FOR 50Nm & 100Nm MOTORS) D 2807205



RECEIVER Type D - 120 Volt-1000W (FOR 300Nm MOTOR) D 2807210



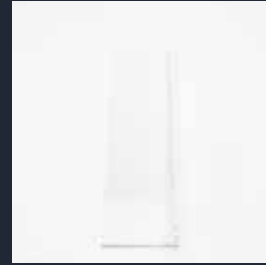
ADVANCED HURRICANE TECHNOLOGY

ANGLES



ALUM. ANGLE 1 x 2 x 1/8 @ 20'

White - 3001201
Ivory - 3001202
Beige - 3001203
Bronze - 3001204



ALUM. ANGLE 1 x 3 x 1/8 @ 20'

White - 3001301
Ivory - 3001302
Beige - 3001303
Bronze - 3001304



ALUM. ANGLE 2 x 2 x 1/8 @ 20'

White - 3002201
Ivory - 3002202
Beige - 3002203
Bronze - 3002204



ALUM. ANGLE 2 x 3 x 1/8 @ 20'

White - 3002301
Ivory - 3002302
Beige - 3002303
Bronze - 3002304



ALUM. ANGLE 2 x 4 x 1/8 @ 20'

White - 3002401
Ivory - 3002402
Beige - 3002403
Bronze - 3002404



ALUM. ANGLE 2 x 5 x 1/8 @ 20'

White - 3002501
Ivory - 3002502
Beige - 3002503
Bronze - 3002504



ALUM. ANGLE 2 x 7 x 1/4 @ 20'

White - 3002701
Ivory - 3002702
Beige - 3002703
Bronze - 3002704



ALUM. ANGLE 3 x 3 x 1/4 @ 20'

White - 3003301
Ivory - 3003302
Beige - 3003303
Bronze - 3003304

TUBES



ALUM. TUBE 1 x 2 x 1/8 @ 24'

White - 3051201
 Ivory - 3051202
 Beige - 3051203
 Bronze - 3051204



ALUM. TUBE 1 x 3 x 1/8 @ 24'

White - 3051301
 Ivory - 3051302
 Beige - 3051303
 Bronze - 3051304



ALUM. TUBE 2 x 2 x 1/8 @ 24'

White - 3052201
 Ivory - 3052202
 Beige - 3052203
 Bronze - 3052204



ALUM. TUBE 2 x 3 x 1/8 @ 24'

White - 3052301
 Ivory - 3052302
 Beige - 3052303
 Bronze - 3052304



ALUM. TUBE 4 x 4 x 1/4 @ 24'

White - 3054401
 Ivory - 3054402
 Beige - 3054403
 Bronze - 3054404



ALUM. TUBE 4 X 6 X 1/4 @ 20'

White - 3054611
 Ivory - 3054612
 Beige - 3054613
 Bronze - 3054614

HARDWARE

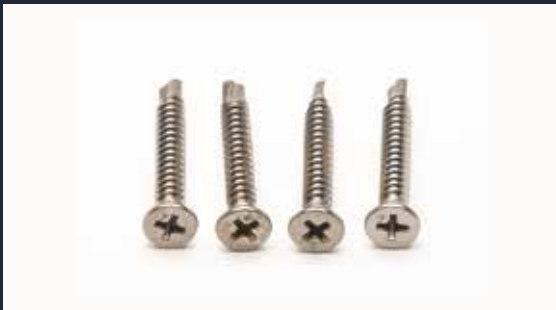


SPRAY PAINT

White - 4010101
 Ivory - 4010102
 Beige - 4010103
 Bronze - 4010104



SCREW 60MM 3-1/4" SPECIAL COAT 4063032



SCREW 58MM 1-1/2" FLAT PHIL HEAD 4063541



SCREW 58MM AND 55MM 2-1/2" FLAT SQUARE HEAD 4063543



SCREW NO.6 X 1/4" PHIL HEAD 4066010



SCREW 5/16" -18 X 1-1/4" FLAT PHIL HEAD 4066012



NUT IDLER 5/16"-18 LOCK NUT W/NYLON 4066017



SCREW 1/4" -20 X 1-1/4" FLAT PHIL HEAD 4066021

HARDWARE



NUT 1/4"-20 LOCK NUT W/NYLON
4066025



SCREW - SELF DRILL #10 X 3/4"
WHITE - 4066231
IVORY- 4066232
BEIGE- 4066233
BRONZE- 4066234



LOCK WASHER 1/4" SS 4066350
LOCK WASHER 5/16" SS 4066352



RIVET - ALUMINUM 3/16" X 4066801
[(.062)(.125)] DRILL #11



RIVET - ALUMINUM 3/16" X 4066804
[(.251)(.375)] DRILL #11



ADVANCED HURRICANE TECHNOLOGY

6063 Janes Ln,
Naples, FL
34109
USA

sales@aht-usa.net

(239) 260-0020

 www.rolldowns.com

 [@advance_hurricanetechnology](https://www.instagram.com/advance_hurricanetechnology)

 [/@advancedhurricanetech](https://www.facebook.com/advancedhurricanetech)